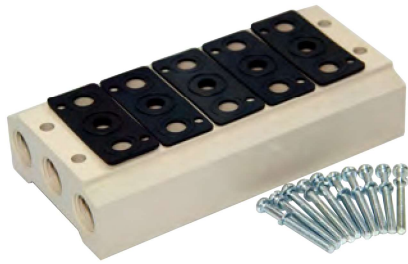


## Manifold



### Specification

Item\Manifold Model	100M	200M	300M	400M
Fluid	Air(to be filtered by 40 μ m filter element)			
Temperature	-20~70℃			
Adaptable valve's series	4V100 Series	4V200 Series	4V300 Series	4V400 Series
	5V100 Series	5V200 Series	5V300 Series	5V400 Series

### Product feature

1. It is available to integrate the direction control valves of the same series to form valve group to save space and cost.
2. It is easy to examine when there are faults owing to the unified air intake and exhaust and unified wiring.
3. Flexible combination and strong expansion capability can make any combination or expansion of the numbers of direction control valves that are connected.

### Ordering code

#### Ordering code for manifold

**100M 5F G**

①    ②    ③

① Model	② Number of stations [Note1]	③ Thread type
100M:100 Series manifold 200M:200 Series manifold 300M:300 Series manifold 400M:400 Series manifold	1F: 1 Station 2F: 2 Station 3F: 3 Station ..... 16F: 16 Station	G: G Thread

#### Ordering code for blank plate

**P-100M-R2**

①    ②    ③

① Kits model	② Model	③ Code
P: Kits	100M: 100 Series manifold 200M: 200 Series manifold 300M: 300 Series manifold 400M: 400 Series manifold	R2: Blank plate for manifold

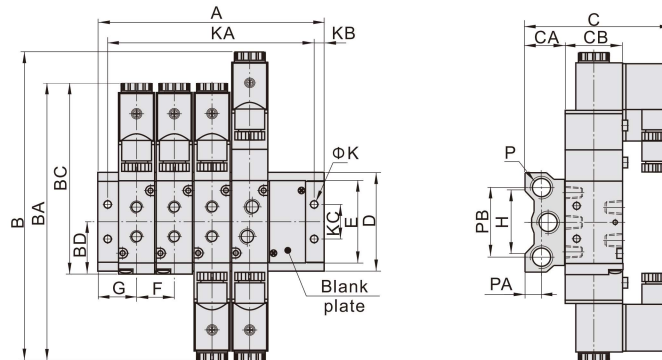
[Note1] 100M, 200M series have a maximum of 16 stations ; 300M series have a maximum of 12 stations; 400M series have a maximum of 8 stations.

[Note] 1. Ordering code contains manifold and blank plate.    2. Manifold kits contains manifold, seal and screw.

3. Blank plate kits contains blank plate and screw.

### Dimensions

#### With 4V solenoid valve



Model\Item	B	BA	BC	BD	C	CA	CB	D	E	F	G	H	K	KB	KC	P	PA	PB
100M□F	154.5	142.5	99.5	28	77	22	27	57.5	43	19	19	36	4.5	5	20	1/4"	10	40
200M□F	189	171	117	31.7	91	24	35	60	52	23	22	38	4.5	5	21	1/4"	10	42
300M□F	208	190	135	40	97	28	40	75	64	28	26	54	4.5	5	26	3/8"	13.5	53
400M□F	243	223	168.5	57	107	33	50	100	94	35	30.5	75	5.5	6	32	1/2"	15	68

Model\Item	A															
	1F	2F	3F	4F	5F	6F	7F	8F	9F	10F	11F	12F	13F	14F	15F	16F
100M□F	38	57	76	95	114	133	152	171	190	209	228	247	266	285	304	323
200M□F	44	67	90	113	136	159	182	205	228	251	274	297	320	343	366	389
300M□F	52	80	108	136	164	192	220	248	276	304	332	360	-	-	-	-
400M□F	61	96	131	166	201	236	271	306	-	-	-	-	-	-	-	-

Model\Item	KA															
	1F	2F	3F	4F	5F	6F	7F	8F	9F	10F	11F	12F	13F	14F	15F	16F
100M□F	28	47	66	85	104	123	142	161	180	199	218	237	256	275	294	313
200M□F	34	57	80	103	126	149	172	195	218	241	264	287	310	333	356	379
300M□F	42	70	98	126	154	182	210	238	266	294	322	350	-	-	-	-
400M□F	49	84	119	154	189	224	259	294	-	-	-	-	-	-	-	-