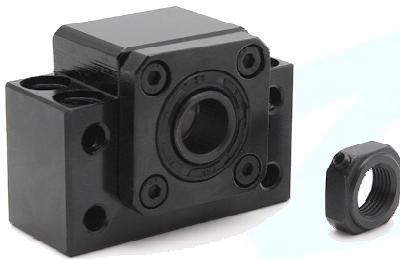


BKXX

Fixed Bearing Block



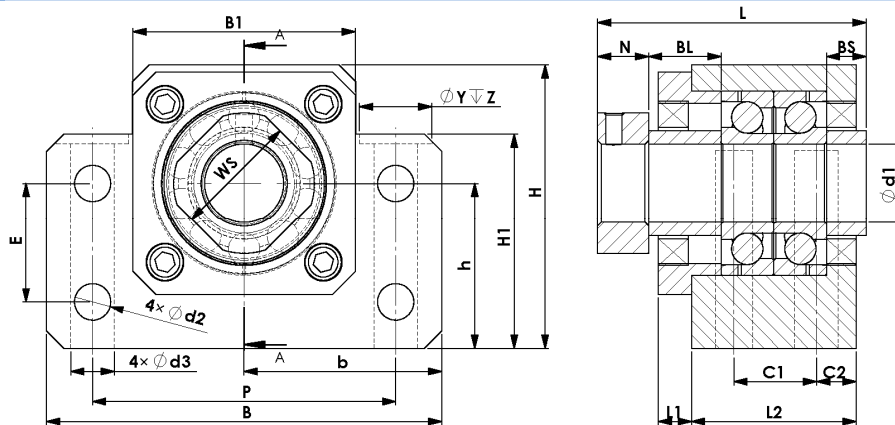
1. Features

- Two angular contact ball bearings in O-arrangement
- Black coated Block
- Sealing on both sides
- Flange with flexible ring to hold the ball bearings axially in position
- Square Nut with locking screw to fix.

2. Description

In the fixed bearing block, a spindle is held in position without play by the use of two angular contact ball bearings in an O arrangement. When clamping the bearings, only the end faces of the outer rings are in contact with each other due to the inserted spacer. This is the only way to ensure correct clamping. The bearings are clamped to the spindle with the fastening nut supplied. This prevents axial play. Sealing rings on both sides ensure that no lubricant can escape or dirt get into the bearings.

3. Mechanical Dimensions



Art.No. 0510-003-	Name	Dimensions in mm																					
		d1	L	L1	L2	C1	C2	N	BL	BS	B	H	b	h	B1	H1	E	P	d2	d3	Y	Z	WS
0106	BK10	10	40	5	25	13	6	7	11	6	60	39	30	22	34	32,5	15	46	5,5	6,6	10,8	5	16
0102	BK12	12	41	5	25	13	6	7	11	6	60	43	30	25	34	32,5	18	46	5,5	6,8	10,5	2	19
0108	BK15	15	42	6	27	15	6	7	9,5	6,5	70	48	35	28	40	38	18	54	5,5	6,6	11	6,5	22
Tolerances			+1	+0,1	+0,2	+0,2	+0,2	+0,1	+0,1	+0,1	+0,2	+0,2	+0,02	+0,02	+0,2	+0,2	+0,2	+0,2	+0,1	+0,1	+0,1	+0,1	+0
			-1	-0,1	-0,2	-0,2	-0,2	-0,1	-0,1	-0,1	-0,2	-0,2	-0,02	-0,02	-0,2	-0,2	-0,2	-0,2	-0,1	-0,1	-0,1	-0,1	-0,5

4. Scope of Delivery

- Bearing Block, preassembled with 2 angular contact all bearings and flange for fixing
- Square Nut with clamping screw

5. Further Information

	Used Bearings	Suitable for	
BK10	2x 7000AC	Ball Spindle SFU 1204,	Art.Nr.: 1001-204-XXXX
BK12	2x 7001AC	Ball Spindle SFU 1605-1610	Art.Nr.: 1001-605-XXXX; 1001-610-XXXX
BK15	2x 7002AC	Ball Spindle SFU 2005-2010	Art.Nr.: 1002-005-XXXX; 1002-010-XXXX;